



NGURAH RAI INTERNATIONAL AIRPORT (WADD / DPS) QUICKVIEW VER 1.0



**NOT FOR REAL NAVIGATION
FOR SIMULATION USE ONLY**



Ngurah Rai International Airport (WADD / DPS)

BALI DIRECTOR (APP) : 119.700
NGURAH TOWER : 118.100
NGURAH GROUND : 118.900



Apt Elev 14'

SQUAWK :

- Domestic : 4400-4477, 4600-4677, 6300-6377
- International : 4100-4177, 6600-6677

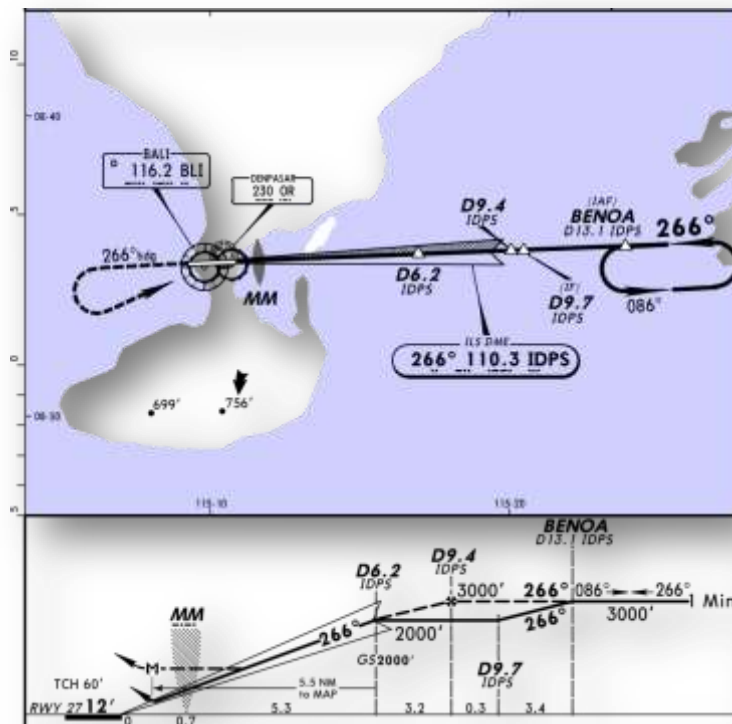
STANDARD INSTRUMENT DEPARTURE

SID	RUNWAY 09	RUNWAY 27	
ANGSA	1C	1D	INTIIL CLIMB RUNWAY HEADING UNTIL 2000'
BADAK	1C	1D	
ENTAS	2C	2D	
GAGAK	1C	1D	
GAJAH	1C	1D	
GALKO	2C	1D	
JALAK	1C	1D	
MALEO	1C	1D	
MURAI	1C	1D	
PANDA	1C	1D	
PEDET	1C	1E	
PEDET	1D	1F	
RABOL	2C	2D	
SELAT	2C	2B	
SRITI	1C	1D	
TIRAS	1C	1D	
UDANG	1C	1D	
WALET	1C	1D	

STANDARD ARRIVAL

SID	RUNWAY 09	RUNWAY 27
ANGSA	1A	1B
BADAK	1A	1B
GAGAK	1A	1B
GAJAH	1A	1B
GALKO	2A	2B
JALAK	1A	1B
LOMBO	2A	2B
MALEO	1A	1B
MURAI	1A	1B
PANDA	1A	1B
PEDET	1A	1B
PENYU	1A	1B
RABOL	2A	2B
SRITI	1A	1B
TIRAS	2A	1B
UDANG	1A	1B
WALET	1A	1B

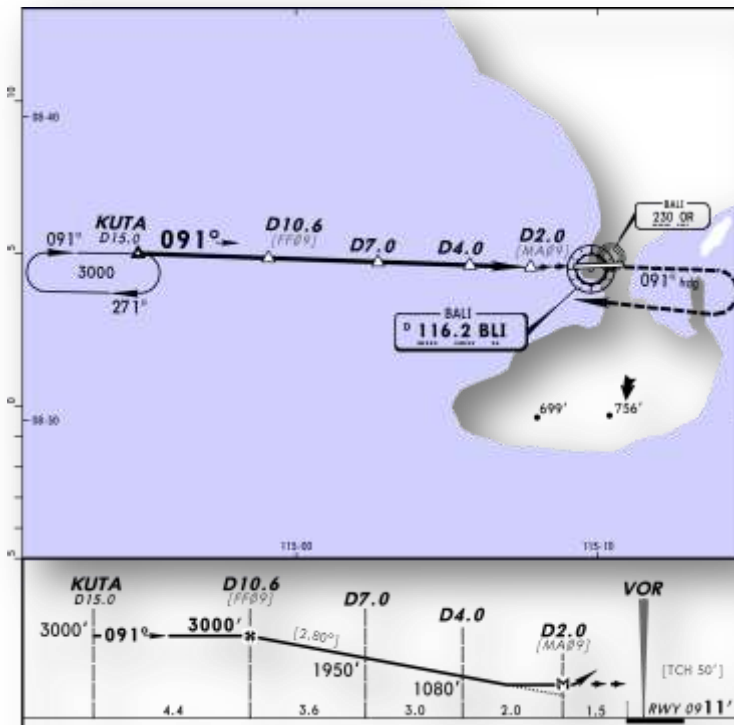
ILS RUNWAY 27



ILS FREQ (IDPS) : 110.300
 FINAL COURSE : 266
 VOR FREQ (BLI) : 116.200
 NDB FREQ (OR) : 230
 RWY 27 ELEVATION : 12'

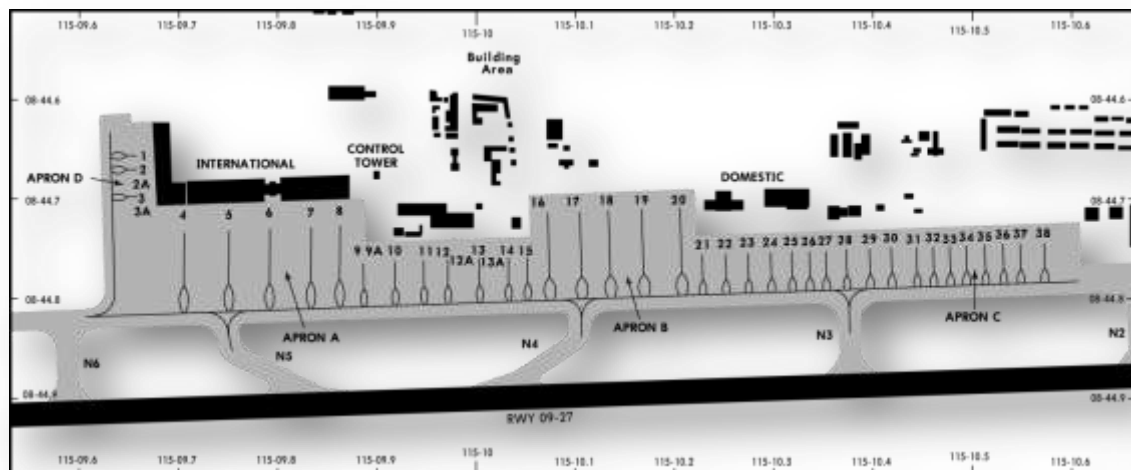
NGURAH RAI INTERNATIONAL AIRPORT (WADD / DPS) QUICKVIEW

VOR DME RUNWAY 09



VOR FREQ (BLI) : 116.200
 FINAL COURSE : 266
 NDB FREQ (OR) : 230
 RWY 09 ELEVATION : 11'

PARKING SPOT



VERSION HISTORY

VERSION	DATE	NOTES
1.0	SEPTEMBER, 2012	INITIAL RELEASE

PREPARED BY ;

Suardi Handoko

SUNARDI HANDOKO
 UJUNG PANDANG FIR CHIEF

Winaldi Wijaya P

WINALDI WIJAYA P
 UJUNG PANDANG ASST FIR CHIEF